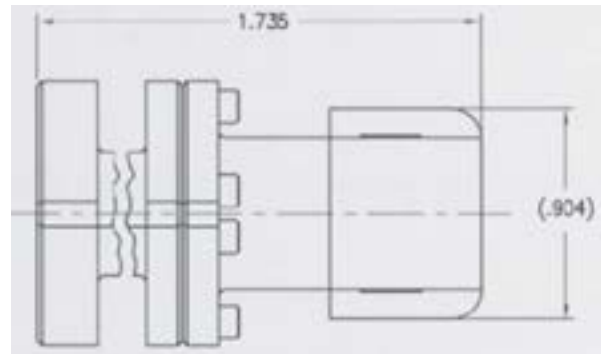
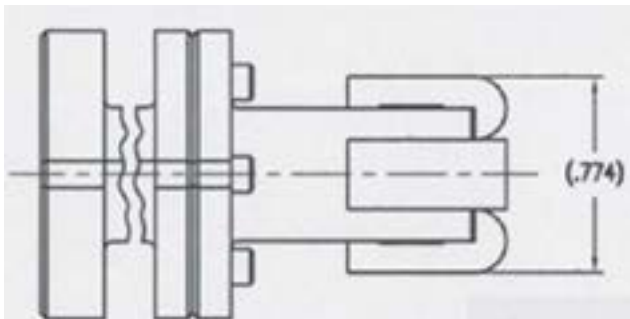


Model 290HC2 Horn Antenna

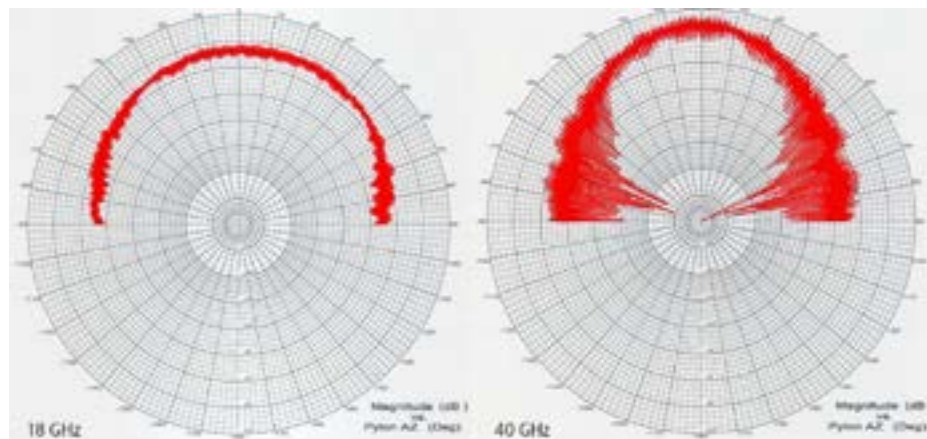
CAES introduces the latest in its line of high performance horn antennas. Model 290HC2 is a millimeter wave circularly polarized horn antenna operating over the 18 to 40 GHz frequency range. This horn antenna utilizes our unique lens designs to broaden the beamwidth for improved field of view coverage. Model 290HC2 has been specifically designed for airborne Electronic Warfare (EW) applications such as Electronic Countermeasures (ECM), Radar Warning Receivers (RWR), Signals Intelligence (SIGINT) and Electronic Intelligence (ELINT). Other potential applications for this product include broadband communications and as a feed element for reflector antennas.



PHYSICAL CONFIGURATION



SAMPLE RADIATION PATTERNS



Model 290HC2 Horn Antenna

FEATURES :

- Compact Size
- RHCP to LHCP
- Variable Length
- High Radiation Efficiency
- Integral Lens
- Rugged Construction

FREQUENCY RANGE:

- 18 to 40 GHz

VSWR:

- 2 : 1 max.

GAIN ON BORESIGHT:

- 18 GHz : 6.0 dBiC
- 40 GHz: 10.0 dBiC

AXIAL RATIO ON BORESIGHT:

- 2.5 dB nominal

POLARIZATION:

- Circular (right or left)

HALF POWER BEAMWIDTH

- E-Plane 80° nominal
- H-Plane 65°nominal

WEIGHT:

- 1.12 oz.

SIZE:

- 1.64 - 1.8 in. (var. Length)

INPUT:

- WRD180

POWER HANDLING:

- 100 Watts CW

